



L & M Travel

(877) 885-7905

For Life Enriching Experiences



What To Do In New Zealand North Island

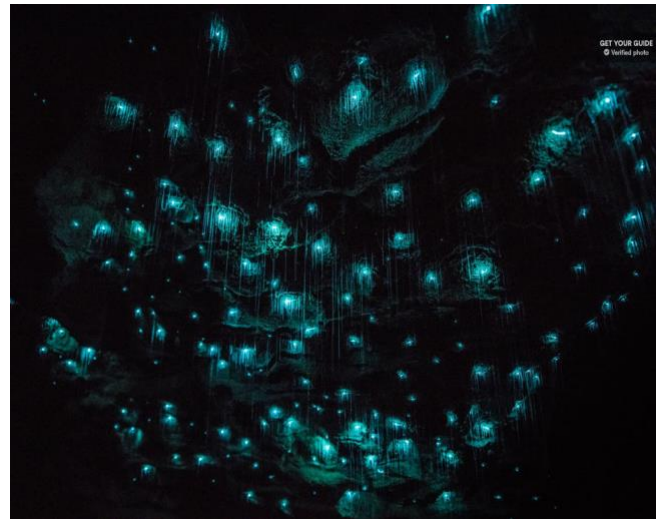


Hobbiton Movie Set Guided Tour

Step into the stunning landscapes of the Shire, as seen in *The Lord of the Rings* and *The Hobbit* trilogies. Take a once in a lifetime opportunity to see the only set that remains intact from the movie trilogies. Wander the rambling paths of The Shire and see the Hobbit Holes in the rolling hillsides. Follow your guide around the set as they show you the most famous locations and explain how the movie magic was made. Walk around the 12-acre set, past Hobbit Holes, the Mill.

Waitomo Glowworm Caves

Embark on a unique subterranean adventure on this 45-minute guided tour of the world-famous Waitomo Glowworm Caves. The caves were formed over 30 million years ago and comprise 2 levels. The upper level is dry and includes the entrance to the cave and formations known as the Catacombs, the Pipe Organ and the Banquet Chamber. On the lower level are stream passages and the Cathedral. Begin on foot as your local guide brings the caves to life with stories about their history. Then, board a boat and marvel at the light display as you glide silently through the starry wonderland of the Glowworm Grotto.



Skyline Rotorua Gondola and Luge

Head to the summit of Mount Ngongotaha on a 10-minute gondola ride before taking on the thrilling Skyline Luge. Enjoy a fun-filled gravity ride on a 3-wheeled cart using a unique braking and steering system that offers full control. Skyline Luge is a world-first, designed and built in Rotorua. Opt for 1, 3, 5 or 7 luge rides. Descend on the sweeping bends of the scenic track that takes you through a redwood forest. After a chair-lift ride back to the top, the intermediate and advanced tracks await. You'll see that once is never enough! Later, enjoy an optional meal or wine-tasting session.



L & M Travel

(877) 885-7905

For Life Enriching Experiences



Piha Beach Day Trip from Auckland

Climb aboard the bus at a central Auckland meeting point. Start your journey on a scenic road trip through Auckland's beautiful Waitakere Ranges. Stop at a lookout to view the famous Lion Rock then spiral down into the valley. Tour around Piha's Beach, town and rainforest. Enjoy an optional one-hour nature walk or be dropped at the beach. On this adventure, you can explore volcanic black sand beaches and lava caves. Climb rugged mountainous terrain and walk through untouched sub-tropical wilderness!

Sky Tower Auckland

An icon of Auckland's skyline, the Sky Tower stands tall at 328 meters. Your ticket includes access to all 3 viewing platforms: The Sky Deck Main Observation level and the Sky Café. If dining with a view is what you're after, there are 3 eateries to choose from: The Orbit 360° revolving restaurant, The Sugar Club and the Sky Café. At the base of the Sky Tower, the SKYCITY Auckland entertainment complex features 2 world-class hotels, Auckland's premier dining precinct with over 20 bars and restaurants, a 700-seat theater and a world-class casino.



Rotorua: Ultimate Zipline Forest Canopy Tour

Take on the Ultimate Canopy Tour for a 3.5-hour zip line experience in Rotorua. Self-drive to a central meeting point or enjoy complimentary pick-up. Check-in and meet your authentic kiwi guides, before you are strapped into your ziplining harness. The experience includes a network of zip lines, suspended swingbridges, spiral staircases, treetop platforms and forest trails. Immerse yourself in this breathtaking country. Hear the inimitable birdsong of New Zealand native birds including Tuis, North Island Robins, Kereru and Tomtits in their natural habitat.